



MASSARENTI MR 4000

HYDRO DRILLING INTERNATIONAL S.p.A.

The "MR" series rigs, fully mechanically driven, are designed to ensure ease of operation in a wide variety of extreme terrain and climatic conditions and to enable the operator to work in areas requiring all-terrain vehicles such as in desert, swamp or jungle conditions and arctic tundra. The drawworks, carrier and mast capacities are matched to provide good performances. The rig is manufactured from high strength material and equipped with heavy duty hydraulic systems capable of providing power for all the hydraulic services.

The rig is trailer mounted and is designed to satisfy the needs of quick rig-up and easily transportable unit

In order to guarantee operations on multi-well cluster, the rig is equipped with a skidding system so to reduce idle time between wells

The drilling control panel is placed in such a way to provide to the driller a complete vision of the drill floor area.

Moreover:

- All decks are checkered plate to ensure a safe walking surface in icy or wet conditions;
- All rig's components can be designed for operations ranging from - 45 °C up to + 50 °C;
- Weather protection on the drill floor area is available;
- Sound-proof shelter for engine is available;



MAIN RIG CHARACTERISTICS

NOMINAL DEPTH RATING

6000 Ft w/ 4" 1/2 DPs

9000 Ft w/ 3" 1/2 DPs

MAST SPECS: 113 Ft Telescopic type hydraulic raising w/Guy lines tied to substr.

Base beams Static hook load 200.000 Lbs = 90 T

RACKING CAPACITY

5" DPs 2.200 m

3" 1/2 DPs 2.920 m

2" 7/8 DPs 4.200 m.

SUBSTRUCTURE

Height 18 Ft = 5.50 m

Rotary cap. 200.000 Lbs = 90 T

Setback cap. 150.000 Lbs = 70 T

DRILLING

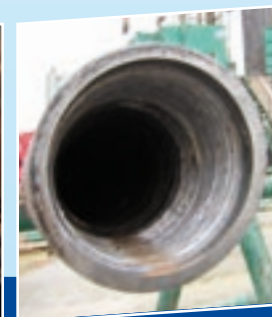
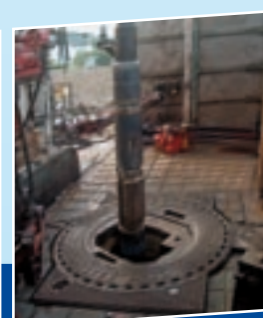
D-WORKS: Massarenti MAS 2000 TR

DRIVE: D. Engine VM-12130T

ROTARY TABLE: MAS 18"

SWIVEL: Ideco 100-C 200 T. Cap.

TRAVELING BLOCK: MAS 3x 24" 100 T. Cap.



MUD SYSTEM

MUD PUMPS

2 x Soilmec triplex 7T-350
5" liner: 6 LPS & 2500 psi
Drive D. Engine 400 Hp c/w air remote control

MUD SYSTEM

3 Tanks total cap. 700 bls c/w 4 mud agitators + 1 water tank
275 bbl

S/SHAKER

2 x BRANDT ATLAS 1000 linear motion

DEGASSER

Vertical separator adaptable for operation w/ rotating control head

CENTR. PUMPS: N°3 "5x6R"

Drive eng. SAME 75 Hp for mud treatment and mixing



WELL CONTROL EQUIPMENT

CHOKE MANIFOLD

3" 1/8 -5000 c/w 1 manual choke + 1 adjustable choke

BLOW OUT PREVENTER

Hydril 13" 5/8 - 3000

CIW double SS 13" 5/8 -5000 U complete w/c 3" 1/2

- 5" Rams

CIW single 13" 5/8 - 5000 U complete w/c Shear /

Blind Rams

BOP CONTROL

Koomey unit



OTHER EQUIPMENT

AC RIG GENS

1 x 350 kVA + 1 x 250 kVA - 3Ph + N 50 Hz

FUEL TANKS

10 mc + 3 mc cap.

RIG SITE

Housing and auxiliary equipment to run operations

Firefighting equipment and safety aids

DRILL PIPES

5"-19.5 Grade G

3 1/2 -15.5 Grade G

DCs 8" -6" 1/2 -4 3/4"



HYDRO DRILLING INTERNATIONAL S.p.A.

Via Trieste, 206 - 48100 Ravenna (Italy)

Tel. +39 0544 424011 - Fax +39 0544 424035

E-mail: info@hydrodrilling.com - www.hydrodrilling.com